

Next Generation!

With the professional
Testo data loggers,
a new age begins for you

Logger series
testo 174



Logger series
testo 175



Logger series
testo 176



The right logger software for every application

Three software versions are available for programming and reading out the data loggers, as well as for the analysis of the data. Depending on the requirement, Testo offers the right software solution. The **testo ComSoft Basic 5** with new graphic user interface offers all the basic functions of a standard logger software. Independently of where the data loggers are used – the testo ComSoft Basic 5 facilitates the configuration and readout of the instruments as well as the analysis of the data. User-friendliness and intuitive operation are paramount here. Requirements over and above this, such as the correlation of measurement data which have been recorded at different sites, are optimally fulfilled by the **testo ComSoft Professional 4**. The pharmaceutical industry makes very special demands, whose fulfilment is guaranteed by the **testo ComSoft CFR21 Part 11**.

testo ComSoft Basic 5 – for easy operation and convenient analysis

- Graphic user interface guides the user step-by-step through the individual procedures
- Convenient export functions, e. g. for further processing of the data in Microsoft Excel, or the generation of a PDF which can be made available to other users
- The testo ComSoft Basic 5 offers all the basic functions of a logger software
- **Free download** of the testo ComSoft Basic 5 with mandatory registration

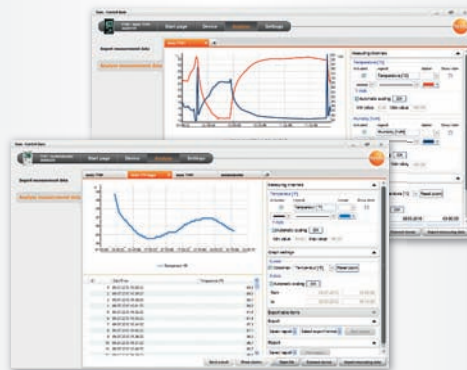


More information:
www.testo.com



CD ComSoft Basic 5, if free,
registration-mandatory download not
wanted

Order no.: 0572 0580



testo ComSoft Professional 4 – for demanding users

- The ComSoft Professional 4 offers analysis and presentation possibilities over and above the basic functions
- Many measurement sites and data loggers can be organized in a clear tree structure, for example

Order no.: 0554 1704

testo ComSoft CFR 21 Part 11 – specially for the requirements of the pharmaceutical industry

- The ComSoft CFR 21 Part 11 is a validation-capable software, and fulfils all the stipulations of the FDA (Food and Drug Administration) in the framework of a closed system
- Conformity with the CFR guidelines is confirmed by an independent institute

Order no.: 0554 1705



External probes – the right accessories for every application

Probe		Meas. range	Accuracy	t99	Order no.
NTC					
Stump probe, IP 54		-20 to +70 °C	±0.2 °C (-20 to +40 °C) ±0.4 °C (+40.1 to +70 °C)	15 sec	0628 7510
Stationary probe with aluminium sleeve, IP 65		-30 to +90 °C	±0.2 °C (0 to +70 °C) ±0.5 °C (remaining meas. range)	190 sec	0628 7503*
Stainless steel NTC food probe (IP 65) with PUR cable		-50 to +150 °C**	±0.5% of m.v. (+100 to +150 °C) ±0.2 °C (-25 to +74.9 °C) ±0.4 °C (rem. meas. range)	8 sec	0613 2211*
Accurate immersion/penetration probe Cable length 1.5 m, IP 67		-35 to +80 °C	±0.2 °C (-25 to +74.9 °C) ±0.4 °C (remaining meas. range)	5 sec	0628 0006*
Waterproof NTC immersion/penetration probe		-50 to +150 °C	±0.5% of reading (+100 to +150 °C) ±0.2 °C (-25 to +74.9 °C) ±0.4 °C (rem. meas. range)	10 sec	0613 1212
Thermocouple					
Stationary probe with stainless steel sleeve, TC Type K		-50 to +205 °C	Class 2****	20 sec	0628 7533
Pipe wrap probe with Velcro tape for temperature measurements on pipes diameter to max. 120 mm, Tmax. +120 °C, TC Type K		-50 to +120 °C	Class 1****	90 sec	0628 0020
Pipe wrap probe for pipe diameters 5 to 65 mm, with exchangeable measuring head, measuring range briefly up to +280 °C, TC type K		-60 to +130 °C	Class 2****	5 sec	0602 4592
Magnet probe, adhesion approx. 10 N, with magnets, for higher temperatures, for measurements on metal surfaces, TC type K		-50 to +400 °C	Class 2****		0602 4892
Thermocouple with TC plug flexible, length 1500 mm, fibreglass, TC Type K		-50 to +400 °C	Class 2****	5 sec	0602 0645
Superfast needle probe for monitoring cooking times in ovens, TC Type T		-50 to +250 °C	± 0.2 °C (-20 to +70 °C) Class 1 (remaining measuring range)****	2 sec	0628 0030
Pt100					
Robust Pt100 stainless steel food probe (IP 65)		-50 to +400 °C	Class A (-50 to +300 °C), Class B (rem. meas. range)	10 sec	0609 2272*
Robust, waterproof Pt100 immersion/penetration probe		-50 to +400 °C	Class A (-50 to +300 °C), Class B (rem. meas. range)	12 sec	0609 1273*
Laboratory probe Pt100, glass-coated, Glass tube (Duran 50) exchangeable, resistant to corrosive media		-50 to +400 °C	Class A (-50 to +300 °C), Class B (rem. meas. range)	45 sec 12 sec **	0609 7072*
Humidity					
Humidity / temperature probe 12 mm		0 to +40 °C, 0 to +100 %RH	±0.3 °C, ±2 %RH (2 to 98 %RH)		0572 6172
Humidity / temperature probe 4 mm		0 to +40 °C, 0 to +100 %RH	±0.3 °C, ±2 %RH (2 to 98 %RH)		0572 6174

Complete overview of probes:
www.testo.com/datenloggers



- The specified tightness class for data loggers is fulfilled with these probes
- * Probe tested according to EN 12830 for suitability for the areas of transport and storage
- ** without protective glass
- *** Long-term measuring range to +125 °C, briefly to +150 °C or +140 °C (2 minutes)
- **** Acc. to norm 60584-2, the accuracy of Class 1 refers to -40 to -100 °C (Type K), Class 2 to -40 to +1200 °C (Type K), Class 3 to -200 to +40 °C (Type K)





Ordering data

Designation

Order no.

Data loggers

testo 174T	1-channel temperature logger with internal sensor (NTC)	0572 1560
testo 174H	2-channel temperature and humidity data logger with internal sensor (NTC/capacitive humidity sensor)	0572 6560
testo 175 T1	1-channel temperature logger with internal sensor (NTC)	0572 1751
testo 175 T2	2-channel temperature data logger with internal (NTC), and external sensor connection (NTC)	0572 1752
testo 175 T3	2-channel temperature data logger with external sensor connection (TC Type T and Type K)	0572 1753
testo 175 H1	2-channel temperature and humidity data logger with external sensor (NTC/capacitive humidity sensor)	0572 1754
testo 176 T1	1-channel temperature logger in metal housing with highly accurate internal sensor (Pt100)	0572 1761
testo 176 T2	2-channel temperature logger with connections for highly accurate external sensor (Pt100)	0572 1762
testo 176 T3	4-channel temperature data logger in metal housing with external sensor connection (TC Type T, Type K and Type J)	0572 1763
testo 176 T4	4-channel temperature data logger with external sensor connections (TC Type T, Type K and Type J)	0572 1764
testo 176 H1	4-channel temperature and humidity data logger with external sensor connections (NTC/capacitive humidity sensor)	0572 1765
testo 176 H2	4-channel temperature and humidity data logger in metal housing with external sensor connections (NTC/capacitive humidity sensor)	0572 1766
testo 176 P1	5-channel pressure, temperature and humidity data logger with internal sensor (absolute pressure) and external sensor connections (NTC/capacitive humidity sensor)	0572 1767

Accessories

testo 174D	USB interface for programming and reading out the loggers testo 174T and testo 174H	0572 0500
USB cable	Cable for connecting the data loggers testo 175 and testo 176 with a PC, mini USB to USB	0449 0047
SD card	SD card for collecting the measurement data from the data loggers testo 175 and testo 176, application range to -20 °C	0554 1700
Wall holder	Wall holder (black) with padlock for testo 175	0554 1702
Wall holder	Wall holder (black) with padlock for testo 176	0554 1703
Battery testo 174	Lithium button battery CR 2032 for testo 174T and testo 174H (please order two batteries per logger)	0515 0028
Battery for testo 175	Application range below -10 °C, alkaline manganese microcells AAA (please order 3 batteries per logger)	0515 0009
Battery for testo 175	Application range below -10 °C, Energizer L92 microcells AAA (please order 3 batteries per logger)	0515 0042
Battery for testo 176	1 x TLH-5903 AA cell	0515 1760

Software

ComSoft Basic 5	CD ComSoft Basic 5 (if free, registration-mandatory download not wanted)	0572 0580
ComSoft Professional 4	Pro software incl. data archiving	0554 1704
ComSoft CFR 21 Part 11	Software for requirements according to CFR 21 Part 11 for Testo data loggers	0554 1705

Calibration certificates

ISO temperature calibration certificate; temperature probe; calibration points: -18 °C, 0 °C, +40 °C; per channel/instrument	0520 0153
DKD temperature calibration certificate; temperature probe; calibration points: -18 °C, 0 °C, +60 °C; per channel/instrument	0520 0261
ISO humidity calibration certificate; humidity probe; calibration points: 11.3 %RH and 75.3 %RH at +25 °C/+77 °F; per channel/instrument	0520 0076
DKD humidity calibration certificate; humidity probe; calibration points: 11.3 %RH and 75.3 %RH at +25 °C/+77 °F; per channel/instrument	0520 0246
ISO calibration certificate absolute pressure, pressure sensor, 5 calibration points over measuring range	0520 0125
DKD calibration certificate absolute pressure, pressure sensor, 11 calibration points over measuring range	0520 0212